

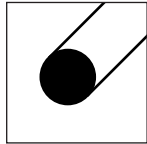


**Überblick**  
**Allgemeine Informationen**

*Survey*  
*General informations*

*Contenu*  
*Informations générales*

1

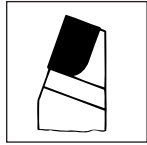


**HSS Drehlinge**  
**HSS-Abstecher**  
**VHM-Stäbe**  
**HSS- und HM Gravierstichel**

*Tool bits HSS,*  
*Cut-off-blades HSS*  
*Solid carbide-blades HSS*  
*Engraving cutters HSS, ans carbide*

*Barreaux traités en ARS*  
*Lames à saigner et à tronçonner en ARS*  
*Berreaux carbure*  
*Burins à graver en ARS et carbure*

2

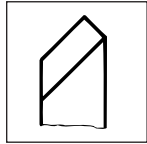


**HM-Drehmeißel**  
**HM-Lötplatten**  
**Bohrstahlhülsen**

*Carbide brazed turning tools*  
*Carbide brazing tips*  
*Clamping holders for*  
*round turning tools*

*Outils brasés en carbure*  
*Plaquettes en carbure*  
*Porte-outils pour outils ronds*  
*de tournage*

3

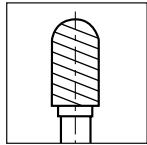


**HSS-Drehmeißel**  
**Bohrstahlhülsen**

*Turning tools HSS*  
*Clamping holders for*  
*round turning tools*

*Outils de tour en ARS*  
*Porte-outils pour outils ronds*  
*de tournage*

4

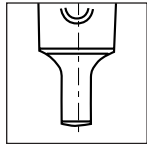


**HM-Frässtifte**

*Tungsten carbide burrs*

*Fraises limes rotatives*

5

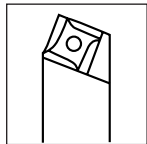


**Kegeldorne, Reduzier-  
und Verlängerungshülsen**  
**Austreiber**  
**Bohrfutter**

*Arbors,*  
*reduction- and extention-sleeves*  
*drift-keys*  
*drill-chucks*

*Arbres porte-forets, douilles*  
*de réduction, allonges porte-forets,*  
*chasse-cônes*  
*mandrins porte-forets*

6

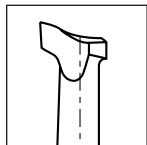


**CAMLOCK**  
**Wendeschneidplatten**  
**und Halter**

*CAMLOCK*  
*inserts and turning tool-holders*

*CAMLOCK*  
*plaquettes et porte outils*

7

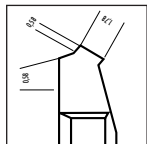


**Ausdreh- und**  
**Stechwerkzeuge**

*Boring and cut-off-tools*

*Outils de tournage interieur*  
*et tronçonnage*

8

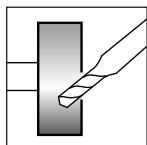


**Sonderwerkzeuge**

*Special tools*

*Outils speciaux*

9



**Nachschleif-Service**

*Regrinding-service*

*Service de rectification*

10

11

12